

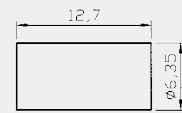
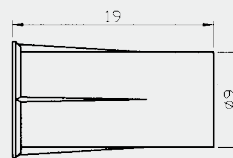
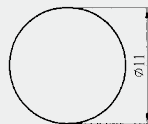
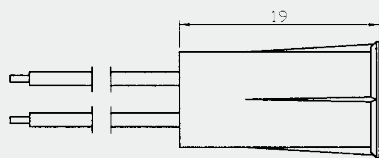
Specification: **BR-1012**

- * 3/8" diameter miniature flush mounted
- * Press to fit
- * Standard 18" #22AWG Leads
- * Special leads upon request
- * Switch or magnet are available separately
- * Resistor, Diode and Supervisory Loop available on request
- * Colors: White, Brown, Grey

... Recessed Mounted

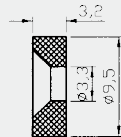


Dimension (mm):

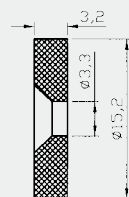


MN2550
for BR-1012MN2550

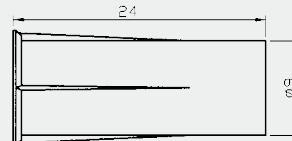
Alternate Rare Earth Magnets:



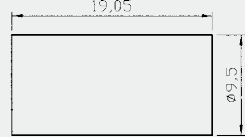
MN400
for BR-1012DM



MN600
for BR-1012DMWG



M3710C
for BR-1012WGL



MN3775
for BR-1012XWG

Order Information:

Part Number	Loop Type	Reed Form	Closed Gap [Inch(mm)]	Depature Gap [Inch(mm)]	Maximum Initial Contact Resistance (Ohm)	Maximum Contact Rating (W)	Maximum Switching Voltage (VDC/VAC)	Maximum Switching Current (A)
BR-1012	Closed	N/O	3/4 (19)	0.8 (20)	0.150	10	100	0.5
BR-1012WG	Closed	N/O	1 ¹ / ₄ (32)	1.45 (37)	0.150	10	100	0.5
BR-1012WGL	Closed	N/O	1 ¹ / ₈ (28)	1.1 (28)	0.150	10	100	0.5
BR-1012MN2550	Closed	N/O	3/4 (20)	0.9 (23)	0.150	10	100	0.5
BR-1012DM	Closed	N/O	5/8 (16)	0.75 (19)	0.150	10	100	0.5
BR-1012DMWG	Closed	N/O	1 (25)	1.05 (27)	0.150	10	100	0.5